



SENTERA DOUBLE 4K INSPECTION SENSOR



Seamlessly integrates
into any platform

The rugged Sentera Double 4K inspection sensor is designed with no moving parts, with optional quick-release 2D gimbal mount. The Double 4K uses a wide-angle field of view (FOV) lens to audit a structure, and a magnified narrow FOV lens to instantly see 12 MP of detail.

Sentera's Double 4K inspection sensor streamlines data collection by providing a wide-angle FOV ideal for auditing a structure's overall condition and the capability to zoom in using the second, magnified narrow FOV lens. These paired, configurable sensors eliminate the need for a second drone flight or a physical climb to assess a potential issue.

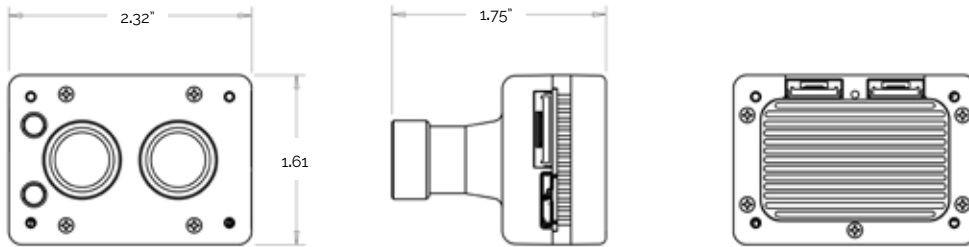
The small, light Double 4K sensor is universally compatible with any drone.

FEATURES & BENEFITS

- Simultaneously captures wide-angle FOV and magnified narrow FOV imagery
- Expedites imagery download utilizing enhanced processor
- Instantly download images
- Easily modified to advance with industry technologies
- Captures 4K ultra high-definition video
- Seamlessly integrates with OnTop™ software

DOUBLE 4K INSPECTION SENSOR

DIMENSIONS

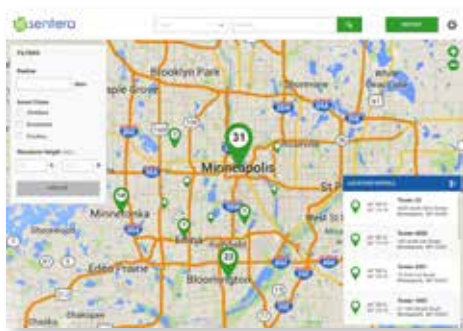


SPECIFICATIONS

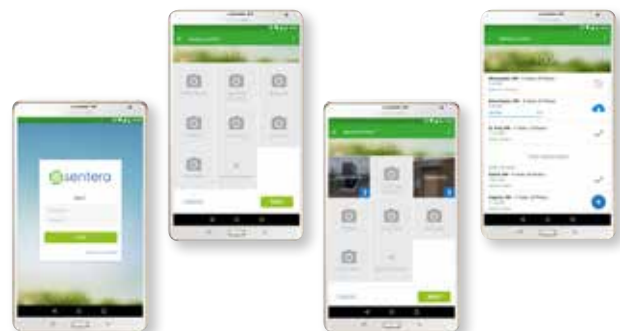
Sensors	12.3MP BSI CMOS RGB 12.3MP BSI CMOS RG+NIR - NDVI Capable <ul style="list-style-type: none"> ERS correction Sony Exmor R™ IMX377 Sensor 	Field of view	4K image/video ranges 15° - 60° HFOV 1080p ranges 7.5° - 60° HFOV
Size	2.32" x 1.61" x 1.75" (59mm x 40.9mm x 44.5mm) <ul style="list-style-type: none"> Fits the GoPro® Hero4 footprint 	Interfaces	Ethernet, Serial/UART, USB 3.0, I2C, GPIO <ul style="list-style-type: none"> Web-based camera configuration Pushbutton control for single photo and mode select
Weight	80 grams	Control	Open ICD for triggering and metadata logging over serial or IP, compatible with: <ul style="list-style-type: none"> Lockheed Martin Kestrel™ autopilot PIXHAWK™ autopilot MAVLink™ based systems Customized ICD options available
Power	8W typical / 12W maximum	Storage	64GB SD card, standard and removable
Image format	JPEG, TIFF, RAW	Data	Seamlessly integrates with Sentera OnTop™
Data capture	12.3MP Stills 4K Ultra HD video @ 30fps 1080p/720p Video <ul style="list-style-type: none"> H.264 encoding 		

SENTERA ONTOP™ SOFTWARE

One drone flight can result in hundreds of images. Sentera's proprietary software solution, OnTop, enables professionals to manage these images and unlock the value embedded within them. OnTop allows users to organize, store, view, comment on, and share critical images with teams and organizations, expanding the circle of impact. OnTop is compatible with many of the most popular analytics, mosaic, and 3D modeling tools, creating a seamless flow of imagery and data from capture to detailed analysis.



Sentera OnTop desktop software



Sentera OnTop mobile app



GoPro® Hero4 is a registered trademark of GoPro, Inc.; Snapdragon™ is a trademark of Qualcomm Technologies; Exmor R™ is a trademark of Sony Corporation; Kestrel™ is a trademark of Lockheed Martin; MAVLINK™ and PIXHAWK™ are trademarks of Lorenz Meier.



Contact us—let's do something amazing!

Sentera, LLC
6636 Cedar Ave South, Ste 250
Minneapolis, MN 55423

+1 (844) SENTERA (844.736.8372)
+1 (612) 204.2000 direct

www.sentera.com
info@sentera.com