



DOUBLE 4K AGRICULTURE SENSOR



The Sentera Double 4K agriculture sensor simultaneously captures normalized difference vegetation index (NDVI) and high-resolution RGB imagery, quickly securing valuable crop health data in a single flight.

Sentera's Double 4K Agriculture Sensor, the smallest and lightest dual sensor available today, is universally compatible with any drone. The Double 4K captures 12MP high-resolution images and features an enhanced processor which expedites delivery of precise crop health images to popular stitching tools, including Pix4D and Agisoft.

With increased image resolution and augmented processor speed, Double 4K users will enjoy crisper crop maps, with improved shapefiles and stitching.

FEATURES & BENEFITS

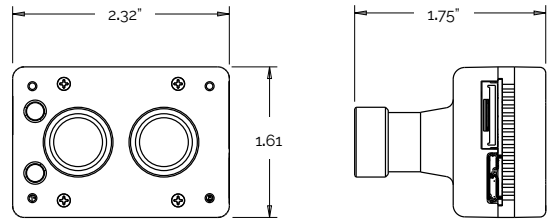
- Capable of livestreaming NDVI video to mobile device via LiveNDVI™ technology
- Simultaneously captures 12MP NDVI and high-resolution RGB imagery
- Expedites imagery download utilizing enhanced processor
- Easily modified to advance with industry technologies
- Capable of 4K ultra-high-definition video capture
- Seamlessly integrates with AgVault™ Web, Mobile, and Desktop Software

DOUBLE 4K AGRICULTURE SENSOR

IMAGERY CAPTURE



Examples of imagery output from the Sentera Double 4K Sensor



SPECIFICATIONS

Sensors	12.3MP BSI CMOS RGB 12.3MP BSI CMOS RG+NIR - NDVI Capable <ul style="list-style-type: none"> ERS correction Sony Exmor R™ IMX377 Sensor 	Storage	64GB SD card, standard and removable
Size	2.32" x 1.61" x 1.75" (59mm x 40.9mm x 44.5mm) <ul style="list-style-type: none"> Fits the GoPro® Hero4 footprint 	Field of view	4K image/video ranges 15° - 60° HFOV 1080p ranges 7.5° - 60° HFOV
Weight	80 grams	Interfaces	Ethernet, Serial/UART, USB 3.0, I2C, GPIO <ul style="list-style-type: none"> WiFi: 802.11a/b/g/n/ac Bluetooth 4.1 Web-based camera configuration Pushbutton control for single photo and mode select
Power	8W typical / 12W maximum	Control	Open ICD for triggering and metadata logging over serial or IP, compatible with: <ul style="list-style-type: none"> Lockheed Martin Kestrel™ autopilot PIXHAWK™ autopilot MAVLink™-based systems Customized ICD options available
Image format	JPEG, TIFF, RAW	Data	Seamlessly integrates with Sentera AgVault™ 2.0 software
Data capture	12.3MP Stills 4K Ultra HD video @ 30fps LiveNDVI™ video capture (available with Omni and Phoenix 2 UAV platforms only) 1080p/720p Video <ul style="list-style-type: none"> H.264 encoding 		

SENTERA AGVAULT™ WEB, MOBILE, & DESKTOP SOFTWARE

Sentera's AgVault™ Web, Mobile, and Desktop software unlocks the value of your imagery. Create shapefiles, QuickTile™ maps, order fully-stitched mosaics, organize, store, view, annotate, and share images with teams and partners, expanding the circle of impact. AgVault is compatible with all popular agricultural analytic tools, creating a seamless flow of imagery and data from capture to detailed analysis.



Sentera AgVault Web



Sentera AgVault Mobile



Contact us—let's do something amazing!

Sentera, LLC
6636 Cedar Ave South, Ste 250
Minneapolis, MN 55423

+1 (844) SENTERA (844.736.8372)
+1 (612) 204.2000 direct

www.sentera.com
info@sentera.com