

# DOUBLE 4K SENSOR

The Sentera Double 4K sensor simultaneously captures imagery quickly securing valuable crop health data in single flight. Versatile configurations and drone compatibility. Generates crop health maps and supports spatial analytics such as stand and tassel count



## VERSATILE

Sentera's Double 4K Sensor, the smallest and lightest dual sensor available today, is universally compatible with any drone. The Double 4K captures 12MP high-resolution images and features an enhanced processor which expedites delivery of precise crop health images to popular stitching tools, including Pix4D and Agisoft.

## ACCURATE

Double 4K can be used in various configurations to fit your needs. With increased image resolution and augmented processor speed, Double 4K users will enjoy crisper crop maps, with improved shapefiles and stitching.

## FEATURES

- Many spectral band and lens configurations
- Generates RGB and crop health maps
- Supports spatial analytics such as stand and tassel count
- Easy system integration
- Integrates with Sentera FieldAgent
- Capable of 4K ultra high-definition video capture

## CUTTING-EDGE

Have confidence in the data you collect and analyze. Sentera's Double 4K Sensor help you gain valuable insights on stand count, early season crop health and elevation maps.



ADVANCING PRECISION AGRICULTURE

# DOUBLE 4K AGRICULTURE SENSOR

## Technical Specifications

### Sensors

12.3MP BSI CMOS RGB  
Sony Exmor R IMX377 Sensor

### Size:

2.32" x 1.61" x 1.75"  
(59mm x 40.9mm x 44.5mm)  
Fits the GoPro Hero4 footprint

### Weight:

80 grams

### Power:

8W typical / 12W maximum

### Image Format:

JPEG, TIFF, RAW

### Storage:

64GB SD card, standard and removable

### Field of View:

60° HFOV (4k Stills / Video)  
1080p ranges 30° - 60° HFOV

### Data Capture:

12.3MP Stills  
4K Ultra HD video @30fps  
1080p / 720p Video  
H.264 encoding

### Interfaces:

Ethernet Serial/UART. USB 3.0 I2C, GPIO  
Web-based camera configuration  
Pushbutton control for single photo and mode select

### Control:

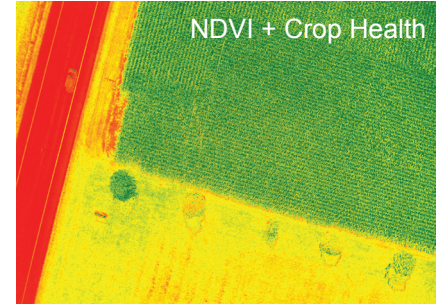
Open ICD for triggering and metadata logging over serial or IP, compatible with:

- PIXHAWK™ autopilot
- MAVLink™- based systems
- Customized ICD options available

### Data Integration:

Seamlessly integrates with Sentera FieldAgent Web, Mobile, and Desktop Software.

## Imagery Capture



## Performance Specifications

	NDVI/NDRE	Analytics	Ag+	Multispectral	Weed Mapper
Image Sensors	2X 12MP Rolling Shutter Sony IMX377	2X 12MP Rolling Shutter Sony IMX377	2X 12MP Rolling Shutter Sony IMX377	2X 12MP Rolling Shutter Sony IMX377	2X 12MP Rolling Shutter Sony IMX377
Sensor 1 Spectral Configuration	RED + NIR (NDVI)	Zoom RGB	RGB	Red + Green + Blue	RGB
Sensor 1 HFOV	60	15	60	60	60
Sensor 2 Spectral Configuration	Red Edge + NIR (NDRE)	Red + NIR (NDVI)	Red + NIR (NDVI)	Red Edge + NIR (NDRE)	RGB
Sensor 2 HFOV	60	60	60	60	30
RGB Mapping			✓		✓
NDVI Mapping	✓	✓	✓	✓	
NDRE Mapping	✓			✓	
5 Band Multispectral Mapping				✓	
Yield Estimates		✓	✓		✓
Stand Count		✓	✓		✓
Tassel Count		✓			